

NETO KORISNE POVRŠINE STANA 5A:

– STAN SA LODJOM

$$55,00\text{m}^2 + (8,65\text{m}^2 \times 0,75) = \underline{61,50\text{m}^2}$$

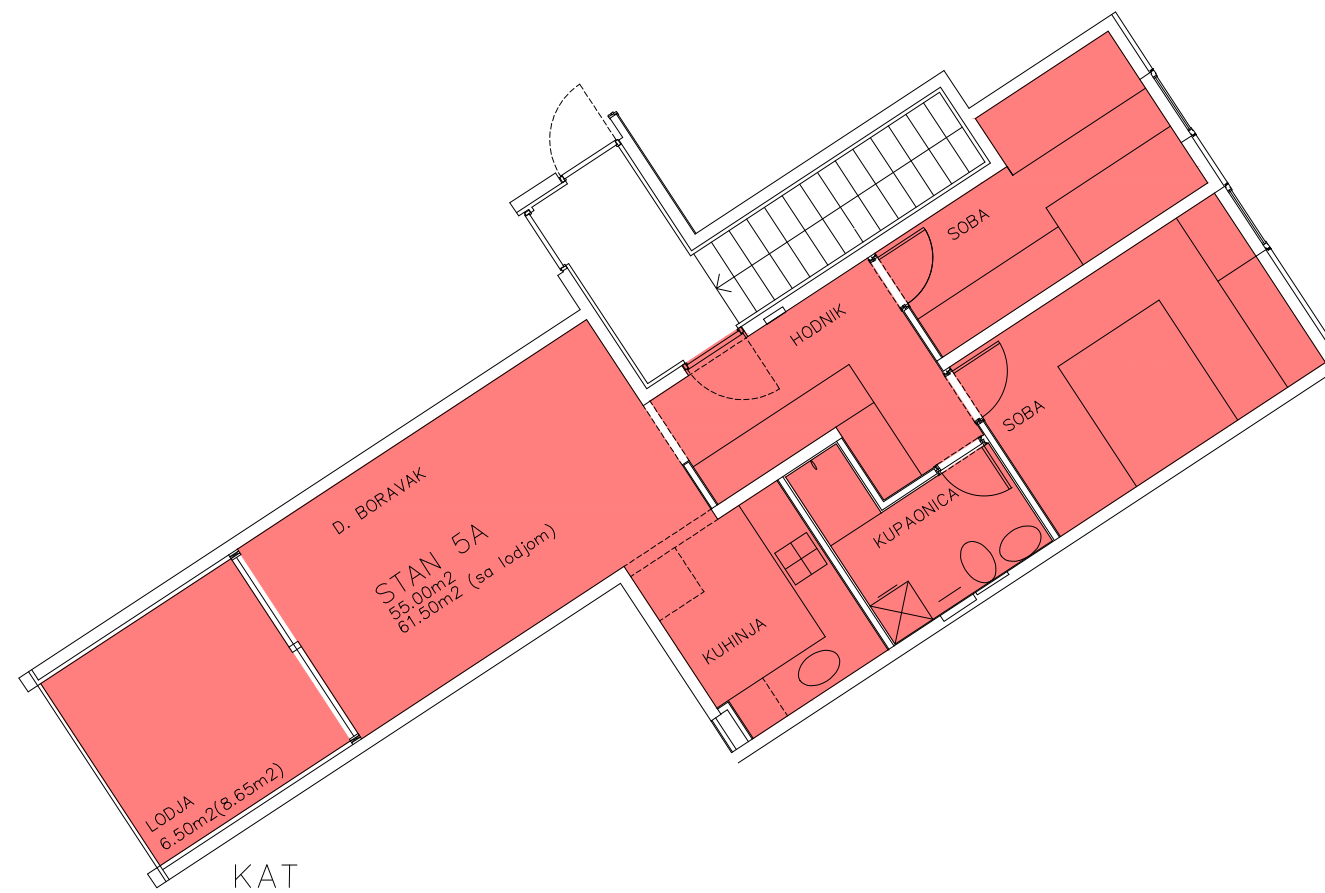
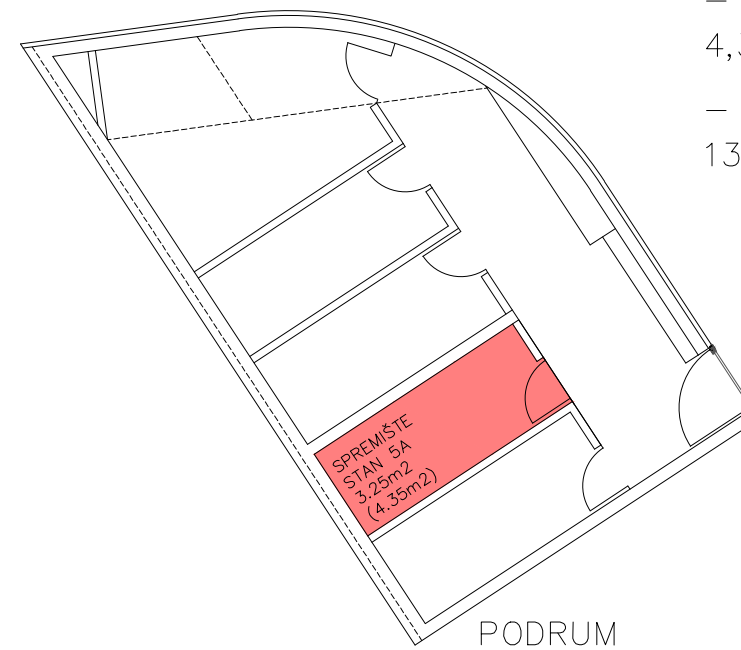
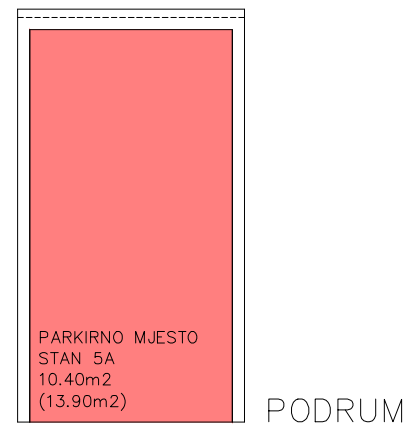
– SPREMIŠTE (PRIPADAK)

$$4,35\text{m}^2 \times 0,75 = \underline{3,25\text{m}^2}$$

– PARKIRNO MJESTO (PRIPADAK)

$$13,90\text{m}^2 \times 0,75 = \underline{10,40\text{m}^2}$$

STUDIO ARCH. PEROSSA d.o.o. 52462 MDMJAN, OSKURUŠ 9	
INVESTITOR ERA MARIS d.o.o.	
GRABEVINA STAMBENI OBJEKT	
LOKACIJA k.o. UMAG, k.c.1039	
PROJEKT-FAZA ETAŽIRANJE	BRJ. PROJEKTA 01/2004
PROJEKT-VRSTA ARHITEKTONSKI	MSERIL 1:100
SADRŽAJ STAN 5A	
DIREKTOR prof.dr.MARIO PEROSSA,d.i.a.	
GLAVNI PROJEKTANT prof.dr.MARIO PEROSSA,d.i.a.	
PROJEKTANTI prof.dr.MARIO PEROSSA,d.i.a. DALILA PEROSSA,d.i.a. PIERO PEROSSA,d.i.a.	
DATUM VELJAČA/2019	LIST BRJ. 7



$$\text{UKUPNO NKP STAN 5A} = 61,50\text{m}^2 + 3,25\text{m}^2 + 10,40\text{m}^2 = \boxed{75,15\text{m}^2}$$