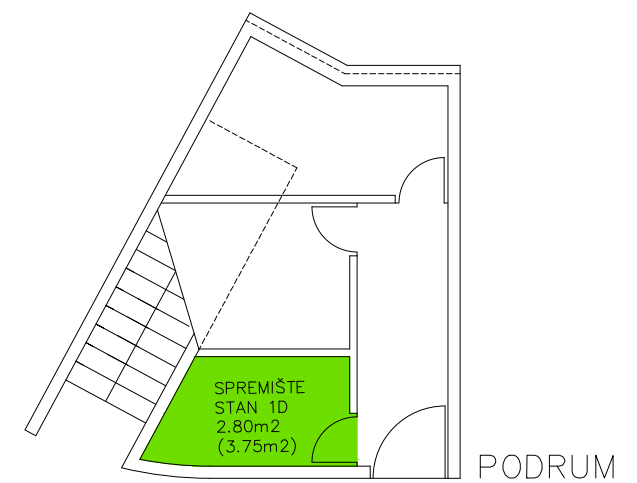
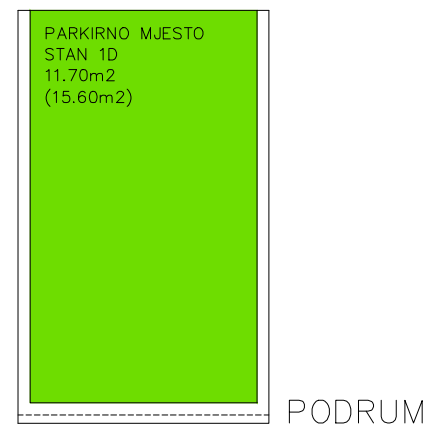


NETO KORISNE POVRŠINE STANA 1D:  
 – STAN SA LODJOM  
 $61,90\text{m}^2 + (9,25\text{m}^2 \times 0,75) = 68,85\text{m}^2$   
 – PARKIRNO MJESTO (PRIPADAK)  
 $15,60\text{m}^2 \times 0,75 = 11,70\text{m}^2$   
 – SPREMIŠTE (PRIPADAK)  
 $3,75\text{m}^2 \times 0,75 = 2,80\text{m}^2$   
 – VRT (PRIPADAK)  
 $35,30\text{m}^2 \times 0,25 = 8,80\text{m}^2$

STUDIO ARCH. PEROSSA d.o.o. 52462 MDMJAN, OSKURUŠ 9	
INVESTITOR ERA MARIS d.o.o.	
GRABEVINA STAMBENI OBJEKT	
LOKACIJA k.o. UMAG, k.c.1039	
PROJEKT - FAZA ETAŽIRANJE	BRJUG PROJEKTA 01/2004
PROJEKT - VRSTA ARHITEKTONSKI	MJERILU 1:100
SADRŽAJ STAN 1D	
DIREKTOR prof.dr.MARIJO PEROSSA,d.i.a.	
GLAVNI PROJEKTANT prof.dr.MARIJO PEROSSA,d.i.a.	
PROJEKTANTI prof.dr.MARIJO PEROSSA,d.i.a. DALILA PEROSSA,d.i.a. PIERO PEROSSA,d.i.a.	
DATUM VELJAČA/2019	LIST BRJUG 16



NKP (STAN SA LODJOM+SPREM.+P.M.) =  $68,85\text{m}^2 + 2,80\text{m}^2 + 11,70\text{m}^2 = 83,35\text{m}^2$   
 UKUPNO NKP STAN 1D =  $68,85\text{m}^2 + 2,80\text{m}^2 + 11,70\text{m}^2 + 8,80\text{m}^2 = 92,15\text{m}^2$