

NETO KORISNE POVRŠINE STANA 4D:

– STAN SA LODJOM

$$68,30\text{m}^2 + (8,65\text{m}^2 \times 0,75) = \underline{74,80\text{m}^2}$$

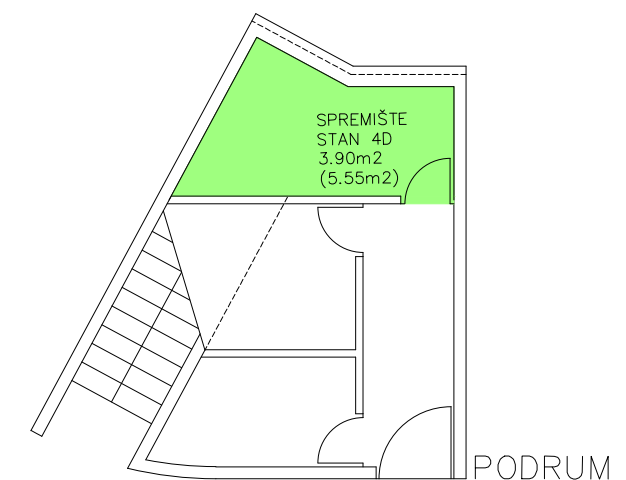
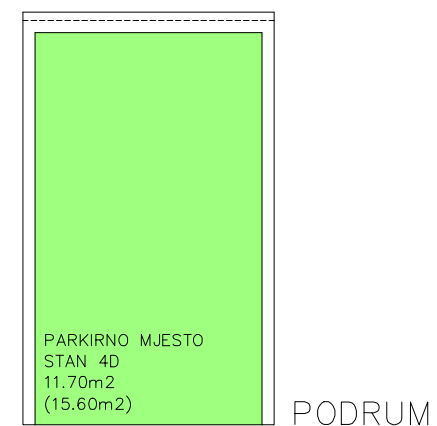
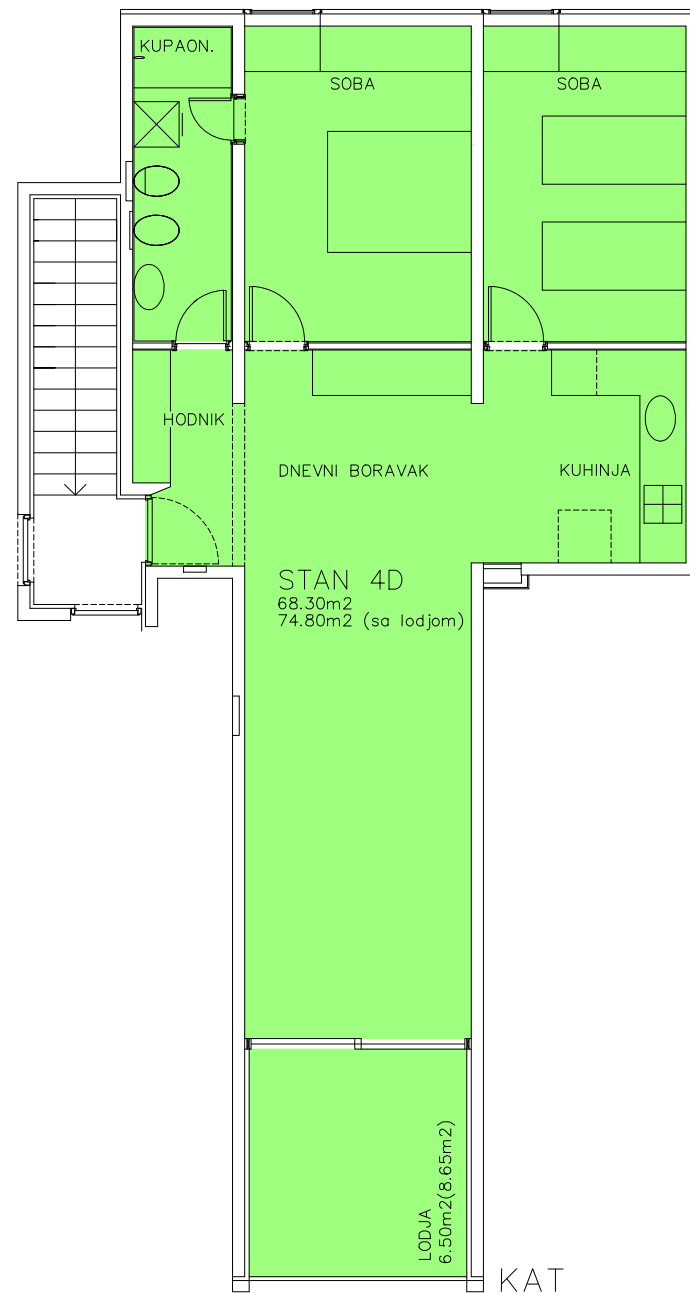
– SPREMIŠTE (PRIPADAK)

$$4,40\text{m}^2 \times 0,75 + 1,15\text{m}^2 \times 0,5 = \underline{3,90\text{m}^2}$$

– PARKIRNO MJESTO (PRIPADAK)

$$15,60\text{m}^2 \times 0,75 = \underline{11,70\text{m}^2}$$

STUDIO ARCH. PEROSSA d.o.o. 52462 MDMJAN, OSKURUŠ 9	
INVESTITOR ERA MARIS d.o.o.	
GRABEVINA STAMBENI OBJEKT	
LOKACIJA k.o. UMAG, k.c.1039	
PROJEKT - FAZA ETAŽIRANJE	BRJUG PROJEKTA 01/2004
PROJEKT - VRSTA ARHITEKTONSKI	MSERIL D 1:100
SADRŽAJ STAN 4D	
DIREKTOR prof.dr.MARIO PEROSSA,d.i.a.	
GLAVNI PROJEKTANT prof.dr.MARIO PEROSSA,d.i.a.	
PROJEKTANTI prof.dr.MARIO PEROSSA,d.i.a. DALILA PEROSSA,d.i.a. PIERO PEROSSA,d.i.a.	
DATUM VELJAČA/2019	LIST BRJUG 19



$$\text{UKUPNO NKP STAN 4D} = 74,80\text{m}^2 + 3,90\text{m}^2 + 11,70\text{m}^2 = \boxed{90,40\text{m}^2}$$