

NETO KORISNE POVRŠINE STANA 3E:

– STAN SA LODJOM

$$66,15\text{m}^2 + (8,65\text{m}^2 \times 0,75) = \underline{72,65\text{m}^2}$$

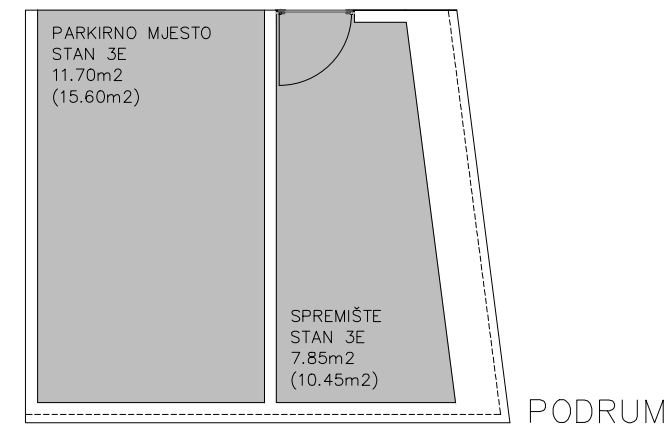
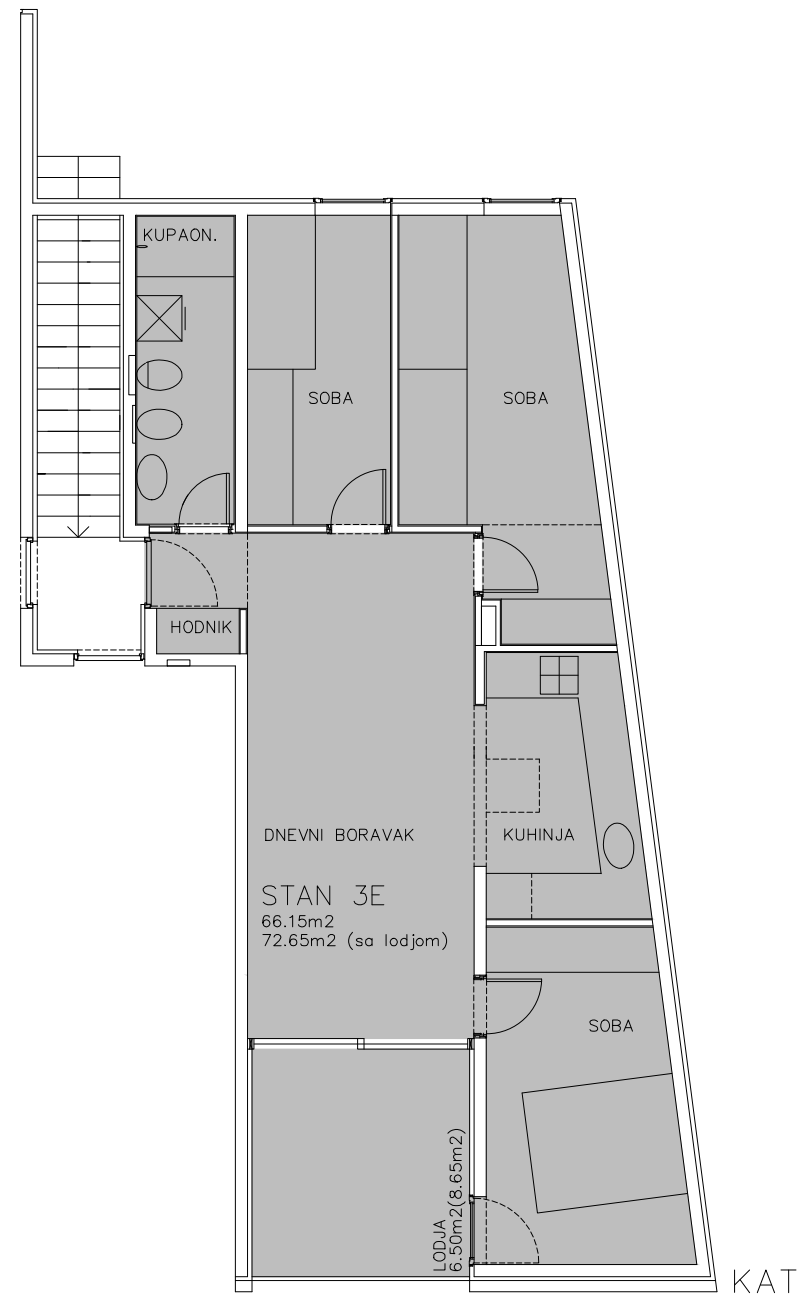
– SPREMIŠTE (PRIPADAK)

$$10,45\text{m}^2 \times 0,75 = \underline{7,85\text{m}^2}$$

– PARKIRNO MJESTO (PRIPADAK)

$$15,60\text{m}^2 \times 0,75 = \underline{11,70\text{m}^2}$$

STUDIO ARCH. PEROSSA d.o.o. 52462 MDMJAN, OSKURUŠ 9	
INVESTITOR ERA MARIS d.o.o.	
GRABEVINA STAMBENI OBJEKT	
LOKACIJA k.o. UMAG, k.c.1039	
PROJEKT - FAZA ETAŽIRANJE	BRJ. PROJEKTA 01/2004
PROJEKT - VRSTA ARHITEKTONSKI	MSERIL 1:100
SADRŽAJ STAN 3E	
DIREKTOR prof.dr.MARIO PEROSSA,d.i.a.	
GLAVNI PROJEKTANT prof.dr.MARIO PEROSSA,d.i.a.	
PROJEKTANTI prof.dr.MARIO PEROSSA,d.i.a. DALILA PEROSSA,d.i.a. PIERO PEROSSA,d.i.a.	
DATUM VELJAČA/2019	LIST BRJ. 24



$$\text{UKUPNO NKP STAN 3E} = 72,65\text{m}^2 + 7,85\text{m}^2 + 11,70\text{m}^2 = \boxed{92,20\text{m}^2}$$