

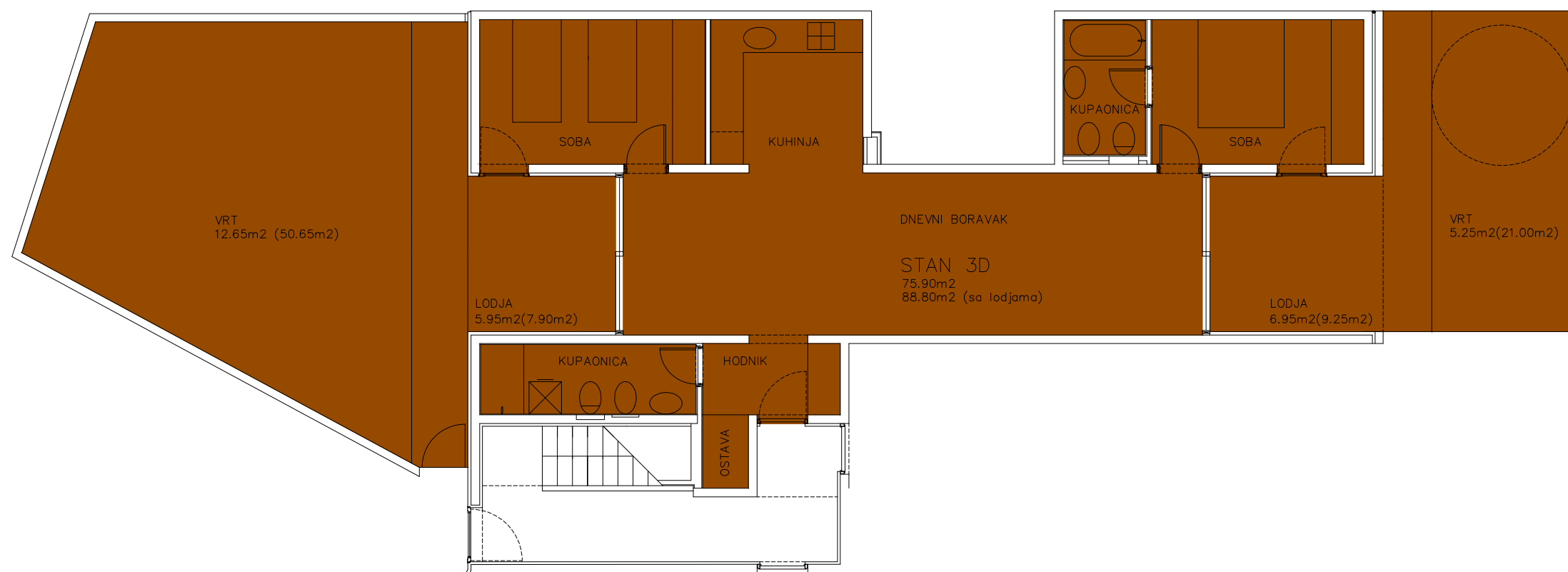
STUDIO ARCH. PEROSSA d.o.o. 52462 MDMJAN, OSKURUŠ 9	
INVESTITOR ERA MARIS d.o.o.	
GRABEVINA STAMBENI OBJEKT	
LOKACIJA k.o. UMAG, k.c.1039	
PROJEKT-FAZA ETAŽIRANJE	BRJ. PROJEKTA 01/2004
PROJEKT-VRSTA ARHITEKTONSKI	MSERIL 1:100
SADRŽAJ STAN 3D	
DIREKTOR prof.dr.MARIO PEROSSA,d.i.a.	
GLAVNI PROJEKTANT prof.dr.MARIO PEROSSA,d.i.a.	
PROJEKTANTI prof.dr.MARIO PEROSSA,d.i.a. DALILA PEROSSA,d.i.a. PIERO PEROSSA,d.i.a.	
DATUM VELJAČA/2019	LIST BRJ. 18

NETO KORISNE POVRŠINE STANA 3D:  
 – STAN SA LODJAMA  
 $75,90\text{m}^2 + (9,25\text{m}^2 + 7,90\text{m}^2) \times 0,75 = 88,80\text{m}^2$   
 – PARKIRNO MJESTO (PRIPADAK)  
 $16,30\text{m}^2 \times 0,75 = 12,20\text{m}^2$   
 – SPREMIŠTE (PRIPADAK)  
 $6,50\text{m}^2 \times 0,75 = 4,90\text{m}^2$   
 – VRT (PRIPADAK)  
 $21,00\text{m}^2 \times 0,25 = 5,25\text{m}^2$   
 – VRT (PRIPADAK)  
 $50,65\text{m}^2 \times 0,25 = 12,65\text{m}^2$

#### PODRUM



#### PRIZEMLJE



NKP (STAN SA LODJAMA+SPREM.+P.M.) =  $88,80\text{m}^2 + 4,90\text{m}^2 + 12,20\text{m}^2 = 105,90\text{m}^2$

UKUPNO NKP STAN 3D =  $88,80\text{m}^2 + 4,90\text{m}^2 + 12,20\text{m}^2 + 5,25\text{m}^2 + 12,65\text{m}^2 = 123,80\text{m}^2$