

NETO KORISNE POVRŠINE STANA 3A:

– STAN SA LODJOM

$$46,45\text{m}^2 + (8,65\text{m}^2 \times 0,75) = \underline{52,95\text{m}^2}$$

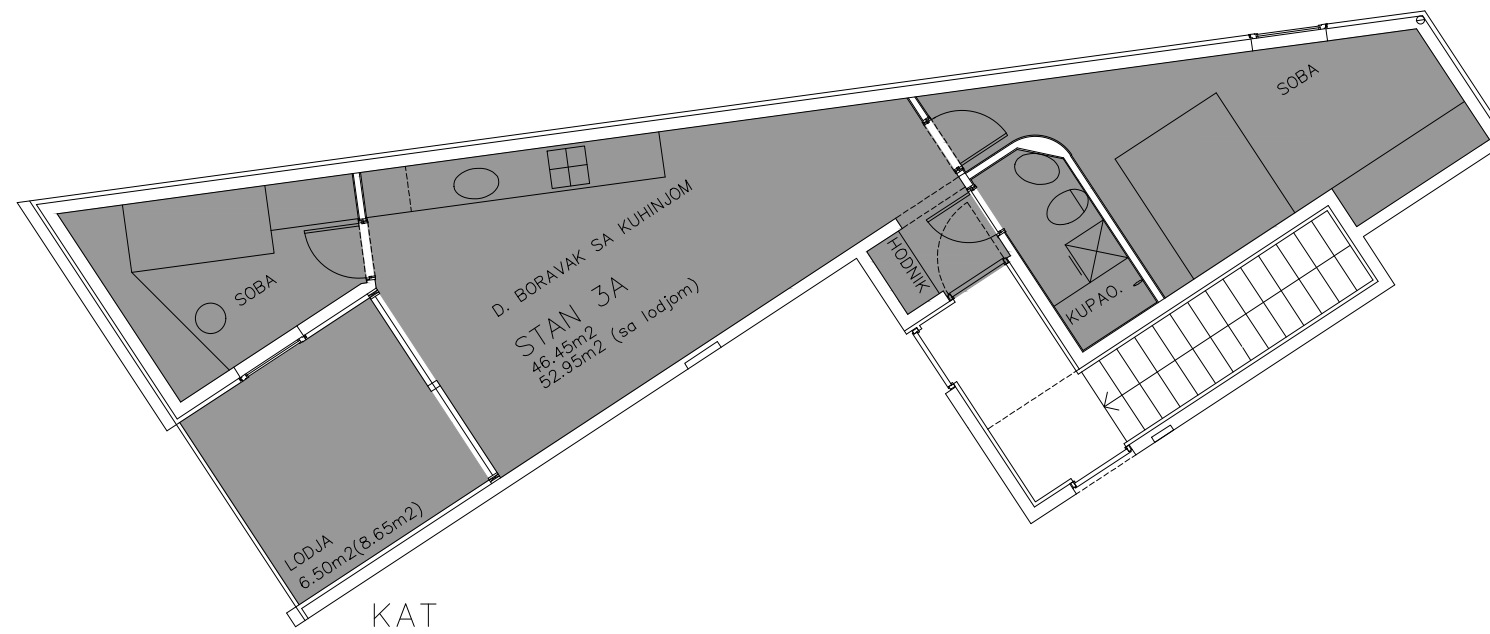
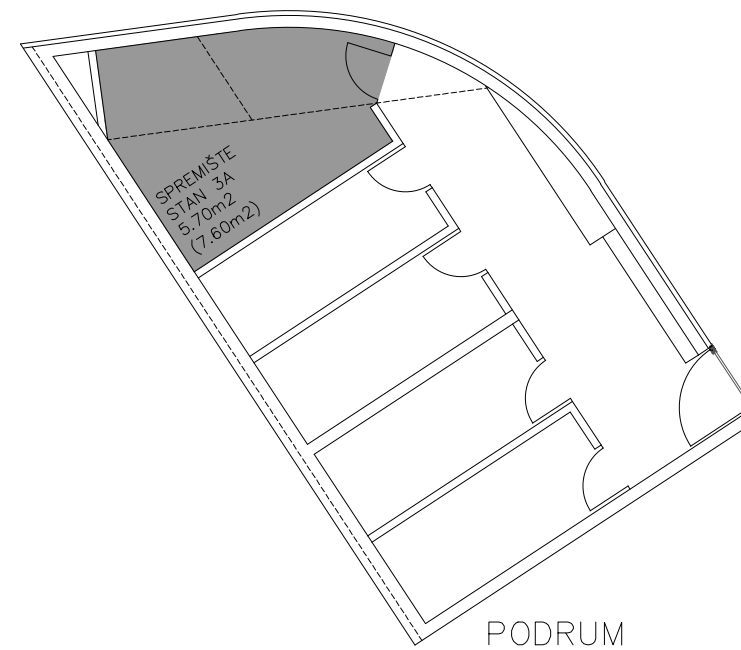
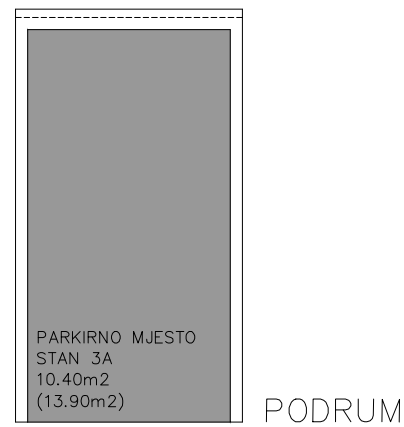
– SPREMIŠTE (PRIPADAK)

$$7,60\text{m}^2 \times 0,75 = \underline{5,70\text{m}^2}$$

– PARKIRNO MJESTO (PRIPADAK)

$$13,90\text{m}^2 \times 0,75 = \underline{10,40\text{m}^2}$$

STUDIO ARCH. PEROSSA d.o.o. 52462 MDMJAN, OSKURUŠ 9	
INVESTITOR ERA MARIS d.o.o.	
GRABEVINA STAMBENI OBJEKT	
LOKACIJA k.o. UMAG, k.c.1039	
PROJEKT - FAZA ETAŽIRANJE	BRJ. PROJEKTA 01/2004
PROJEKT - V RSTA ARHITEKTONSKI	MSERIL D 1:100
SADRŽAJ STAN 3A	
DIREKTOR prof.dr.MARIO PEROSSA,d.i.a.	
GLAVNI PROJEKTANT prof.dr.MARIO PEROSSA,d.i.a.	
PROJEKTANTI prof.dr.MARIO PEROSSA,d.i.a. DALILA PEROSSA,d.i.a. PIERO PEROSSA,d.i.a.	
DATUM VELJAČA/2019	LIST BRJ. 5



$$\text{UKUPNO NKP STAN 3A} = 52,95\text{m}^2 + 5,70\text{m}^2 + 10,40\text{m}^2 = \boxed{69,05\text{m}^2}$$