

NETO KORISNE POVRŠINE STANA 2D:

– STAN SA LODJOM

$$44,55\text{m}^2 + (9,25\text{m}^2 \times 0,75) = \underline{51,50\text{m}^2}$$

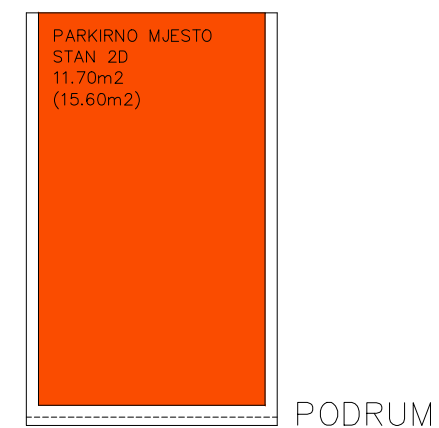
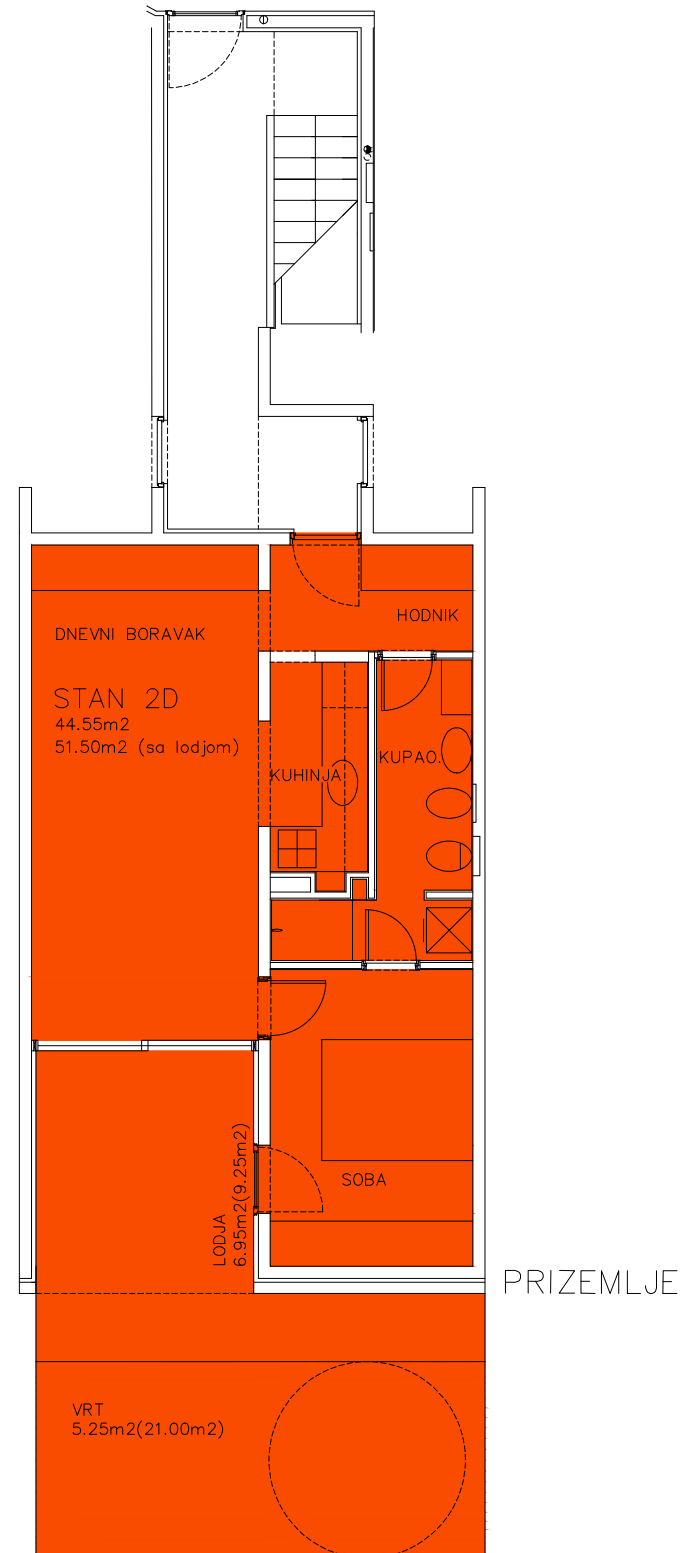
– PARKIRNO MJESTO (PRIPADAK)

$$15,60\text{m}^2 \times 0,75 = \underline{11,70\text{m}^2}$$

– VRT (PRIPADAK)

$$21,00\text{m}^2 \times 0,25 = \underline{5,25\text{m}^2}$$

STUDIO ARCH. PEROSSA d.o.o. 52462 MODJAN, OSKURUŠ 9	
INVESTITOR ERA MARIS d.o.o.	
GRABEVINA STAMBENI OBJEKT	
LOKACIJA k.o. UMAG, k.c.1039	
PROJEKT - FAZA ETAŽIRANJE	BRJ. PROJEKTA 01/2004
PROJEKT - V RSTA ARHITEKTONSKI	MSERIL D 1:100
SADRŽAJ STAN 2D	
DIREKTOR prof.dr.MARIO PEROSSA,d.i.a.	
GLAVNI PROJEKTANT prof.dr.MARIO PEROSSA,d.i.a.	
PROJEKTANTI prof.dr.MARIO PEROSSA,d.i.a. DALILA PEROSSA,d.i.a. PIERO PEROSSA,d.i.a.	
DATUM VELJAČA/2019	LIST BRJ. 17



$$\text{NKP (STAN SA LODJOM+P.M.)} = 51,50\text{m}^2 + 11,70\text{m}^2 = \underline{63,20\text{m}^2}$$

$$\text{UKUPNO NKP STAN 2D} = 51,50\text{m}^2 + 11,70\text{m}^2 + 5,25\text{m}^2 = \underline{68,45\text{m}^2}$$