

NETO KORISNE POVRŠINE STANA 2A:

– STAN SA LODJOM

$$57,20\text{m}^2 + (9,25\text{m}^2 \times 0,75) = \underline{64,15\text{m}^2}$$

– PARKIRNO MJESTO (PRIPADAK)

$$13,90\text{m}^2 \times 0,75 = \underline{10,40\text{m}^2}$$

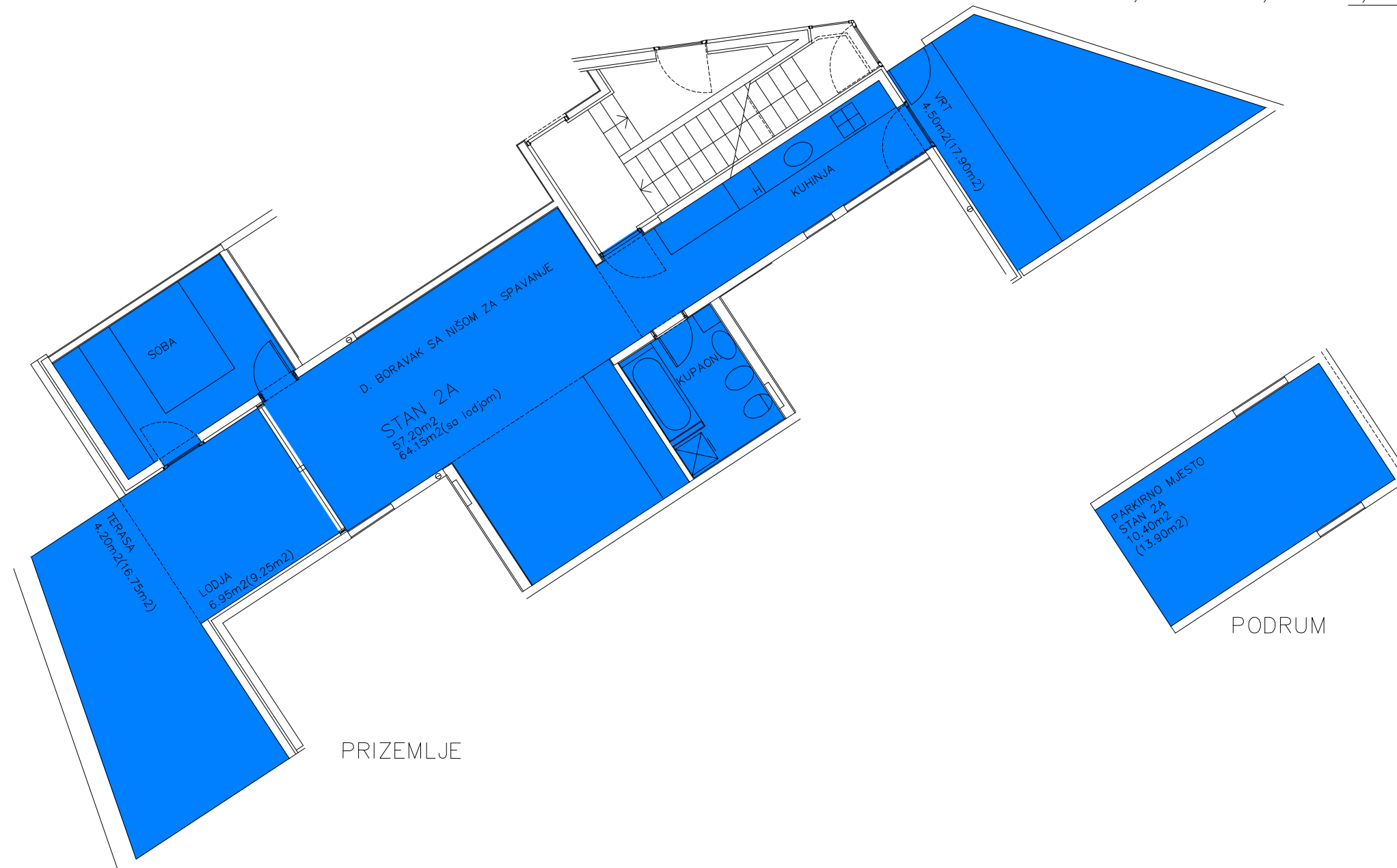
– TERASA (PRIPADAK)

$$16,75\text{m}^2 \times 0,25 = \underline{4,20\text{m}^2}$$

– VRT (PRIPADAK)

$$17,90\text{m}^2 \times 0,25 = \underline{4,50\text{m}^2}$$

STUDIO ARCH. PEROSSA d.o.o. 52462 MDMJAN, OSKURUŠ 9	
INVESTITOR ERA MARIS d.o.o.	
GRABEVINA STAMBENI OBJEKT	
LOKACIJA k.o. UMAG, k.c.1039	
PROJEKT - FAZA ETAŽIRANJE	BRJ PROJEKTA 01/2004
PROJEKT - VRSTA ARHITEKTONSKI	MSERIL D 1:100
SADRŽAJ STAN 2A	
DIREKTOR prof.dr.MARIO PEROSSA,d.i.a.	
GLAVNI PROJEKTANT prof.dr.MARIO PEROSSA,d.i.a.	
PROJEKTANTI prof.dr.MARIO PEROSSA,d.i.a. DALILA PEROSSA,d.i.a. PIERO PEROSSA,d.i.a.	
DATUM VELJAČA/2019	LIST BRJ 4



$$\text{NKP (STAN SA LODJOM+P.M.)} = 64,15\text{m}^2 + 10,40\text{m}^2 = \underline{74,55\text{m}^2}$$

$$\text{UKUPNO NKP STAN 2A} = 64,15\text{m}^2 + 10,40\text{m}^2 + 4,50\text{m}^2 + 4,20\text{m}^2 = \underline{83,25\text{m}^2}$$