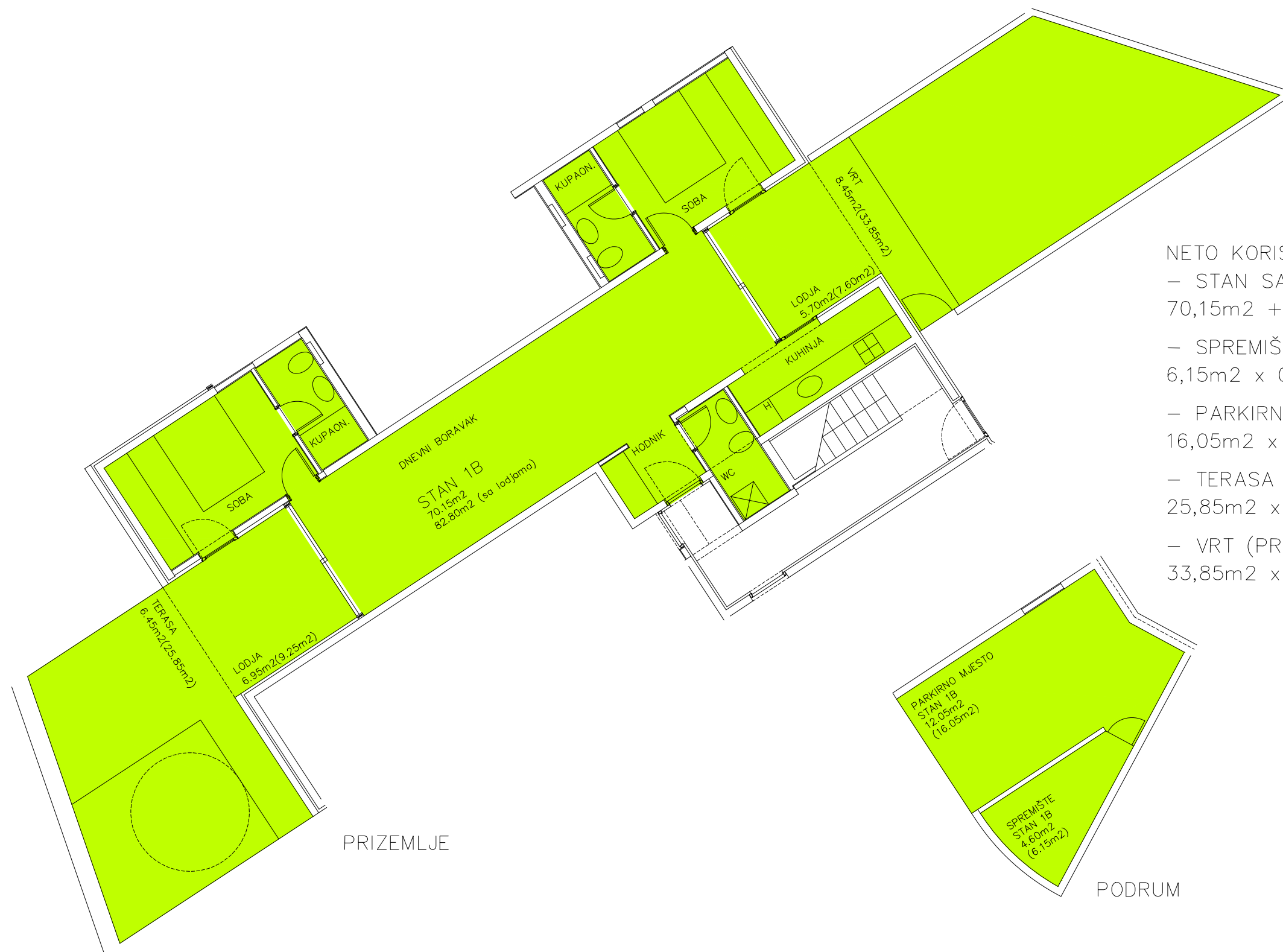


STUDIO ARCH. PEROSSA d.o.o. 52462 MDMJAN, OSKURUŠ 9	
INVESTITOR ERA MARIS d.o.o.	
GRABEVINA STAMBENI OBJEKT	
LOKACIJA k.o. UMAG, k.c.1039	
PROJEKT - FAZA ETAŽIRANJE	BRJ. PROJEKTA 01/2004
PROJEKT - VRSTA ARHITEKTONSKI	MSERIL 1:100
SADRŽAJ STAN 1B	
DIREKTOR prof.dr.MARIO PEROSSA,d.i.a.	
GLAVNI PROJEKTANT prof.dr.MARIO PEROSSA,d.i.a.	
PROJEKTANTI prof.dr.MARIO PEROSSA,d.i.a. DALILA PEROSSA,d.i.a. PIERO PEROSSA,d.i.a.	
DATUM VELJAČA/2019	LIST BRJ. 8



NETO KORISNE POVRŠINE STANA 1B:

- STAN SA LODJAMA
 $70,15\text{m}^2 + (9,25\text{m}^2 + 7,60\text{m}^2) \times 0,75 = \underline{82,80\text{m}^2}$
- SPREMIŠTE (PRIPADAK)
 $6,15\text{m}^2 \times 0,75 = \underline{4,60\text{m}^2}$
- PARKIRNO MJESTO (PRIPADAK)
 $16,05\text{m}^2 \times 0,75 = \underline{12,05\text{m}^2}$
- TERASA (PRIPADAK)
 $25,85\text{m}^2 \times 0,25 = \underline{6,45\text{m}^2}$
- VRT (PRIPADAK)
 $33,85\text{m}^2 \times 0,25 = \underline{8,45\text{m}^2}$

PRIZEMLJE

PODRUM

$$\text{NKP (STAN SA LODJAMA+SPREMIŠTE+P.M.)} = 82,80\text{m}^2 + 4,60\text{m}^2 + 12,05\text{m}^2 = \underline{99,45\text{m}^2}$$

$$\text{UKUPNO NKP STAN 1B} = 82,80\text{m}^2 + 4,60\text{m}^2 + 12,05\text{m}^2 + 8,45\text{m}^2 + 6,45\text{m}^2 = \boxed{114,35\text{m}^2}$$