

NETO KORISNE POVRŠINE STANA 1A:

– STAN

38,45m<sup>2</sup>

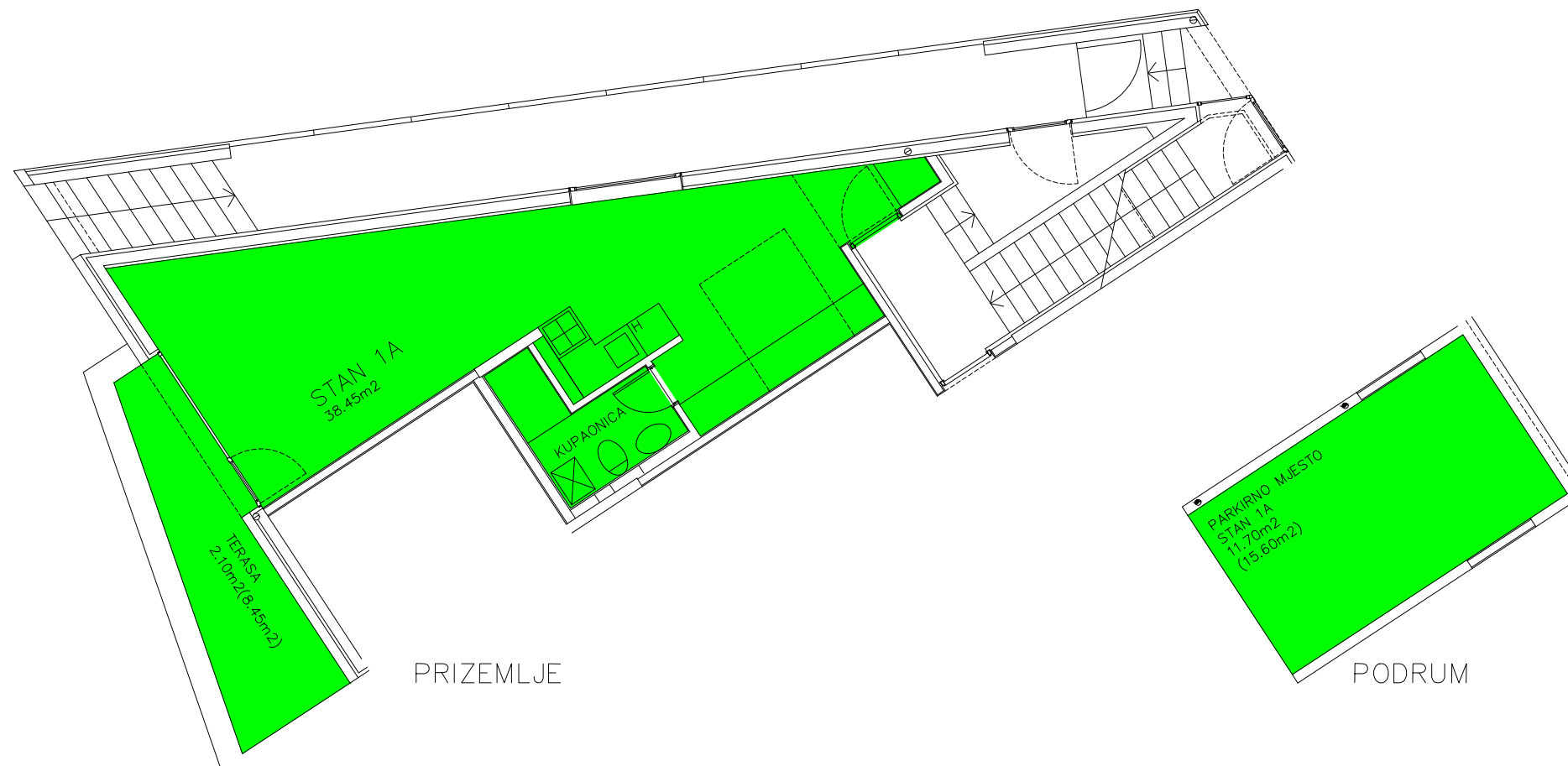
– PARKIRNO MJESTO (PRIPADAK)

15,60m<sup>2</sup> x 0,75 = 11,70m<sup>2</sup>

– TERASA (PRIPADAK)

8,45m<sup>2</sup> x 0,25 = 2,10m<sup>2</sup>

STUDIO ARCH. PEROSSA d.o.o. 52462 MDMJAN, OSKURUŠ 9	
INVESTITOR ERA MARIS d.o.o.	
GRABEVINA STAMBENI OBJEKT	
LOKACIJA k.o. UMAG, k.c.1039	
PROJEKT-FAZA ETAŽIRANJE	BRJ. PROJEKTA 01/2004
PROJEKT-VRSTA ARHITEKTONSKI	MSERIL 1:100
SADRŽAJ STAN 1A	
DIREKTOR prof.dr.MARIO PEROSSA,d.i.a.	
GLAVNI PROJEKTANT prof.dr.MARIO PEROSSA,d.i.a.	
PROJEKTANTI prof.dr.MARIO PEROSSA,d.i.a. DALILA PEROSSA,d.i.a. PIERO PEROSSA,d.i.a.	
DATUM VELJAČA/2019	LIST BROJ 3



$$\text{NKP (STAN+P.M.)} = 38,45\text{m}^2 + 11,70\text{m}^2 = \underline{50,15\text{m}^2}$$

$$\text{UKUPNO NKP STAN 1A} = 38,45\text{m}^2 + 11,70\text{m}^2 + 2,10\text{m}^2 = \boxed{52,25\text{m}^2}$$